


DRINKWARE

6
2
0
2





Svalur MO2903 

Single wall bottle made of 90 % recycled stainless steel and 10% stainless steel with rubber finish. Includes PP and SS lid with silicone handle. Capacity: 500 ml. As this is a single walled bottle **Size** Ø6.1x21.3 cm **Print technique** Round screen printing*,RL,RD,L,P



MO2775



Suma grip MO2775

Double wall insulated bottle in recycled stainless steel (90% recycled stainless and 10% stainless steel) with combination straw and sip lid with handle. Leakfree. Capacity : 500 ml. **Size** Ø7.4X22 cm **Print technique** Round screen printing*,RL,RD,L,PTS



MO2561



Suma hand MO2561

Double wall recycled stainless steel (90% recycled stainless steel and 10% stainless steel) tumbler with lid with inner straw, foldable mouth piece and direct drinking opening . Capacity 850 ml. Leak free. **Size** Ø8.5X23.5 cm **Print technique** Round screen printing*,RD,RLL,P



MO2327



Suma MO2327

Double wall recycled stainless steel tumbler (90% recycled stainless and 10% stainless steel) with straw lid including PE straw. Capacity 1200 ml. **Size** 14X27 cm **Print technique** Laser engraving*,RL,P



Refill, Reuse, Refresh. Go Recycled Stainless.



Spot MO2500



Recycled stainless steel (90% recycled stainless steel and 10% stainless steel) single wall bottle with foldable mouth piece, straw and lid with carrying handle. Capacity: 500 ml. As this is a single walled bottle, heat transfer can still occur. **Size** Ø6.5x18.5 cm **Print technique** Round screen printing*,RD,RL,DL,L,PTS



Toien one MO2989



Single wall recycled stainless steel (90% recycled stainless and 10% stainless steel) bottle. Features 2-in-1 straw and sip PP lid with handle. Leak-free. Capacity: 650 ml. **Size** Ø7.4x26.6 cm **Print technique** Round screen printing*,RL,RD,L,P



Toien two MO2988



Double wall insulated recycled stainless steel (90% recycled stainless and 10% stainless steel) bottle. Features 2-in-1 straw and sip PP lid with handle. Leak-free. Capacity: 500 ml. **Size** Ø7.4x26.6 cm **Print technique** Round screen printing*,RL,RD,L,P



With a
handy sip
and straw lid



Toien klar MO2990 

RPET bottle with 2 in 1 straw and sip lid and handle. Leakfree. Capacity: 700 ml.
Size Ø7.4X26.6 cm **Print technique** Round screen printing*,RD,DL,P



Mugora MO2964

Tumbler in RPET with straw lid including PP straw. Capacity: 1200 ml. Size 14,2X25,5 cm **Print technique** Pad printing*



Sportlle MO2470

Water bottle in RPET with removable fruit infuser with carrying handle and leak proof lid. Capacity 500 ml. Size Ø6.5X24.5 cm **Print technique** Round screen printing*,RD,DL,P



Tottle MO2575

Drinking bottle in RPET with PP lid. Capacity: 750 ml. Not suitable for carbonated drinks. Size Ø7X24.5 cm **Print technique** Round screen printing*,RD,DL,P,D01



Vernal MO6976

Drinking bottle in RPET which is BPA free and stainless steel cap with lid handle. Leak free. Capacity: 600 ml. Size Ø6X23 cm **Print technique** Round screen printing*,RD,PL



Glacier rpet MO6237

Drinking bottle in RPET with rubberised finish (frosted transparent) and stainless steel cap with inner RPET lid and silicone ring. BPA free. Leak-free. Capacity: 600 ml. Not suitable for carbonated drinks. Size Ø6X23 cm **Print technique** Round screen printing*,RD,PL





Tiksi MO6366

Insulated stainless steel flask with non-leak screw cap and additional interchangeable built-in straw cap. Supplied with neoprene carrying bag. Capacity: 700 ml. **Size** Ø7X29 cm **Print technique** Round screen printing*,RL,RD,S,T1,TD,TR,L,P



Noeka MO2716

Double wall insulated bottle in 90% recycled stainless steel and 10% stainless steel, with integrated strap handle and additional long strap (70cm) in PP lid. Leak-free. Bottom cup included. Capacity: 500 ml. **Size** Ø7,5X25,8 cm **Print technique** Round screen printing*,RD,RL,L,P,S,T1,TD,TR



Ivalo MO6938

Double wall recycled stainless steel (90% recycled stainless and 10% stainless steel) insulated vacuum bottle with grip handle lid in PP and integrated straw built-in straw cap. Leak-free. Capacity: 500 ml. **Size** 9X21 cm **Print technique** Round screen printing*,RD,RL,L,P



Boali MO6944

Double wall recycled stainless steel (90% recycled stainless and 10% stainless steel) insulated vacuum bottle with non-leak screw cap and additional interchangeable built-in straw cap. Capacity: 700 ml. **Size** Ø7X26,5 cm **Print technique** Round screen printing*,RD,RL,L,TS,DL,D01,P



Riflow MO2283

Double wall vacuum insulating bottle in recycled stainless steel (90% recycled stainless steel and 10% stainless steel) with built-in straw and handle lid. Capacity: 660 ml. **Size** Ø7X27M cm **Print technique** Round screen printing*,RD,RL,L,PTS



Boris MO2912 ●

High borosilicate glass bottle with silicone pouch and PP lid with handle.
Capacity: 600 ml **Size** Ø8.5X20.5 cm **Print technique** Round screen printing*,P



MO6760



MO2413



MO2315



MO2735



Onto MO6760



Double wall stainless steel vacuum insulated bottle with twist lid and silicone grip. Capacity: 780 ml. **Size** Ø7X26,5 cm **Print technique** Laser engraving*,RL,P,DL



Cordle MO2413



Double wall recycled stainless steel insulated vacuum bottle (90% recycled stainless steel and 10% stainless steel) with integrated cord grip on PP lid. Leak-free. Capacity: 500 ml. **Size** Ø6,5X25 cm **Print technique** Round screen printing*,RD,RL,TS,L,P



Emerald MO2315



Double wall vacuum insulating bottle in recycled stainless steel (90% recycled stainless steel and 10% stainless steel) with rubber finish and silicone handle. Capacity: 500 ml. **Size** Ø7X22,5 cm **Print technique** Round screen printing*,RD,RL,L,P



Bots MO2735



Double wall drinking bottle in recycled stainless steel (90% recycled stainless steel and 10% stainless steel) with security lock on the lid and press-to-open option. Leak free. Capacity: 300ml. **Size** Ø5,8X22,7 cm **Print technique** Round screen printing*,RD,RL,TS,L,P,DL,D01



Qeram



Qeram MO2528

Ceramic tumbler with silicone sleeve and PP lid. Capacity: 330 ml.
Size Ø8,1X11 cm **Print technique** Round screen printing*,P



Goblet MO2773 ●

PP tumbler with silicone sleeve and PP sliding lid. Capacity: 330 ml. As this is a single walled mug, heat transfer can still occur. **Size** 8.4X7.9X11.3 cm **Print technique** Round screen printing*,P



EATING & DRINKING



MO2726



Siroter MO2726

2 in 1 wireless charger 15W and mug warmer device in ABS. With ceramic mug with lid. Capacity: 250 ml. Keep drinks warm to a max of 50°C. 3 temperature settings with touch screen. USB connection cable. Output: DC 9V/1.67A (15W). **Size** 15X11,5X1 cm **Print technique** Round screen printing*,P



06

Espresso MO9634

Porcelain espresso cup and saucer. Cup capacity: 80 ml. **Size** Ø6X 5 cm **Print technique** Pad printing*,TC



06

Paris MO9080

Porcelain conic cappuccino cup with saucer. Cup capacity: 160 ml. Bulk packaging. **Size** Ø14,7X7 cm **Print technique** Pad printing*,TC



06

Tea time MO7343

Tea set including a teapot of 400 ml capacity and a white ceramic cup. Presented in a black gift box. **Size** 12,5X12,5X13 cm **Print technique** Round screen printing*,TC



The energy ritual reinvented



MO2776

MO2423



Miyerba MO2776

Double wall yerba mate cup in recycled stainless steel (90% recycled stainless and 10% stainless steel). Includes stainless steel bombilla straw and cleaning brush. Capacity : 240 ml. **Size** Ø8X10.7 cm **Print technique** Round screen printing*.RL.L.P



Mate MO2423

Single wall tumbler in recycled stainless steel (90% recycled stainless steel and 10% stainless steel) with a detachable grip in acacia wood, stainless steel straw. Straw socket and direct drink opening leak-free lid. Capacity: 260 ml. As this is a single walled mug, heat transfer can still occur. **Size** Ø8X9 cm **Print technique** Pad printing*.L



Walnut MO2322

Single wall tumbler in recycled stainless steel (90% recycled stainless steel and 10% stainless steel) with walnut grip and lid. Capacity: 350 ml. Remove grip for cleaning. As this is a single walled mug heat transfer can still occur. **Size** Ø8.5X10.5 cm **Print technique** Pad printing*.L



MO2322

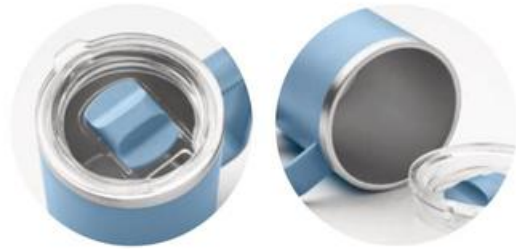


MO6257



Irmug MO6257

Stainless steel single wall tumbler with silicone lid and grip. Capacity 350 ml. As this is a single walled mug heat transfer can still occur. **Size** Ø8X11 cm **Print technique** Pad printing*.L



MO2772



MO2900



Beaker MO2772 ●

PP mug with recycled stainless steel base (90 % recycled stainless steel and 10% stainless steel) and PP sliding lid. Capacity: 300 ml. **Size** 11.2 X 10 cm **Print technique** Round screen printing*,P



Cocoa MO2900 ●

Double wall mug with 90 % recycled stainless steel and 10% stainless steel interior and recycled PP exterior. Includes transparent AS sliding lid. Capacity 400ml. **Size** 11.6X11.5 cm **Print technique** Round screen printing*,P



Sum MO2597

Double wall recycled stainless steel (90% recycled stainless steel and 10% stainless steel) tumbler. Lid with sliding sip hole. Leak-free. Capacity 500 ml. **Size** Ø8,7X17,4 cm **Print technique** Round screen printing*,RD,RL,LP



Brace + MO6579

Double wall in recycled stainless steel (90% recycled stainless steel and 10% stainless steel) tumbler with PP lid. Capacity: 510 ml. Leak free. **Size** Ø8,5X17 cm **Print technique** Round screen printing*,RL,RD,LP



Brace MO6276

Double wall stainless steel tumbler with PP lid. Capacity: 350 ml. Leak free. **Size** Ø8,8X15,1 cm **Print technique** Round screen printing*,RL,RD,LP



Brace+ MO2885

Double wall tumbler 350 ml **Size** Ø8,8X15,1 cm **Print technique** Round screen printing*,RL,RD,LP



Topiz MO2596

Double wall tumbler in PP inner wall, recycled PP outside wall, recycled stainless steel detail and RPET wrist strap. Capacity: 300 ml. **Size** Ø9X14,2 cm **Print technique** Round screen printing*,TD,TR,P



Blerm MO2572

Double wall tumbler in PP outer wall with inner wall in recycled stainless steel (90% recycled stainless steel and 10% stainless steel) with a ceramic inner lining. Leak-free. Capacity: 350 ml. **Size** Ø8,5X14 cm **Print technique** Round screen printing*,P



FLIP, SIP, GO!

Comes with an added flip-lid with built-in silicone straw & spill-control spout.

500 ml



GO BY OCEAN BOTTLE - DWOB 3185 ● Obsidian Black
DWOB 3186 ● Ocean Blue

- Designed with dual opening function
- Lets you sip from spout or base
- Easy access for filling/cleaning
- Made from 90% recycled stainless steel
- Each purchase helps save the ocean by funding the collection of 1000 ocean-bound plastic bottles= 11.368 kgs of plastic
- Collectors get FAIRTRADE International wages
- Powered by a traceable IBM blockchain verified plastic collection system

Branding Options : UV Printing, Silkscreen Printing, Laser Engraving

Product Size : 23.5 X ø 6.8 cm

Packing Details : 41.5 x 31.5 x 30.0 cm; 12 pcs/carton; gw/nw: 8.80 kg/carton





www.dewaltwater.com

Ocean Bottle comes in a range of timeless, vibrant colors inspired by the sea and coastlines.

Each shade reflects the brand's mission to protect our oceans while keeping you stylishly hydrated.

Pantone color matching also available so your bottles can be customized to perfectly match your brand's signature color.

PANTONE COLOR MATCHING AVAILABLE



SANDSTONE



FIRE RED



SUN ORANGE



OBSIDIAN BLACK



ROCK GREY



SKY BLUE



OCEAN BLUE



FOREST GREEN

READY STOCK

IMMEDIATE DELIVERY AND NO MOQ

ORIGINAL
500ml / 17oz

70% Recycled Materials
10 Year Warranty



- DWOB 291
- DWOB 295
- DWOB 3140
- DWOB 296
- DWOB 3139
- DWOB 294
- DWOB 292
- DWOB 293

ORIGINAL
1L / 34oz

71% Recycled Materials
10 Year Warranty



- DWOB 297
- DWOB 298
- DWOB 299

ORIGINAL
750ml / 26oz

67.5% Recycled Materials
10 Year Warranty



- DWOB 3284
- DWOB 3286
- DWOB 3285

GO SPORTS
500ml / 17oz

61% Recycled Materials
10 Year Warranty



- DWOB 3185
- DWOB 3186

BREW
350ml / 12oz

67% Recycled Materials
10 Year Warranty



- DWOB 3121
- DWOB 3125
- DWOB 3126
- DWOB 3124
- DWOB 3122
- DWOB 3123

3-IN-1
500ml / 17oz

61% Recycled Materials
10 Year Warranty



- GSOB 9612
- GSOB 9613





COZY TUMBLER



E70730

E70731

E70733

E70737

E7073

420 ML



420ml Stainless Steel Mug
Stylish and durable tumbler with double-wall construction. Made with SUS304 stainless steel inside and SUS201 outside for lasting insulation. Perfect for both hot and cold beverages.

Product Size: 15.5x8.4cm Dia.
Packaging: Paper Box





INSULATED WATER BOTTLE

Designed to keep your beverages hot for up to 20-24 hours and ICE Cold for up to 24 hours.



MOBILE STAND DRINKWARE



E70622



E706220

BOTELLA PRO

900 ML

E7062

Your 900ml Drink Buddy on the go. Quench your thirst and use the bottle as your mobile stand anywhere you will be. The magnetic phone loop and its portability is very usable. With wide opening for easy cleaning and ice compatibility

Product Size: 25.35x8.45cm Diameter
Packaging: Paper box





PRIME FLASK

420 ML

E7075

BPA
100% FREE

420ml High-quality double wall flask with 316 stainless steel interior and 304 stainless steel exterior. Features vacuum insulation and a food-grade silicone ring for a secure, leak-proof seal. Keeps drinks hot or cold for hours.

Product Size : 16.8x7.8cm Dia.
Packaging: Paper Box



E707133

BPA
100% FREE

80ml



E70711



E70712



ESPRESSO STACKABLE

E7071

Stylish 80ml espresso cups in a Double-wall stainless steel (304 inner, 201 outer) with powder coating and silver-lined lid. Packed in a premium black kraft gift box with EVA and velvet lining.

Product Size: 5.2x5.2x6.3cm.
Packaging: Black Box



E70692



E70691



E706933

STACKABLE

E7069

Recycled Stainless Steel Coffee cup Set in 180ml and 240ml capacities perfect in all of your drinking moods. 304 SS inside and 201 SS outside. With one Lid that fits both mugs.

Box Size: Size: 22x16.9x8.1cm
Packaging: Black Kraft Box



300ml 600ml

FLASKEE SET



E7072

A set of powder coated cups in 600ml and 300ml with interchangeable lids of either a clear press-in lid or a mouth piece lid with an adjustable SS straw and a food grade silicon straw cover. Double wall flasks with 304SS inside.

Box Size: 20.5x26x8.2cm.

Packaging: Paper Box



E70721



E70722



E707235



E707234



FOR HIKING



FOR CAMPING



FOR TRAVEL



FOR DRIVING



FOR CASUAL DRINK



FOR OFFICE

FLASKEE

600ML



E7068

600ml Vacuum Flask with 304 SS inner and powder coating in the outer layer. Has double opening; lid for easy drinking and on the neck part to put ice and for easy cleaning.

Product Size: 24.5x7cm diameter.

Packaging: Paper Box



E70681

E70682

E70683

E70684

E70680

EASY HANDLE

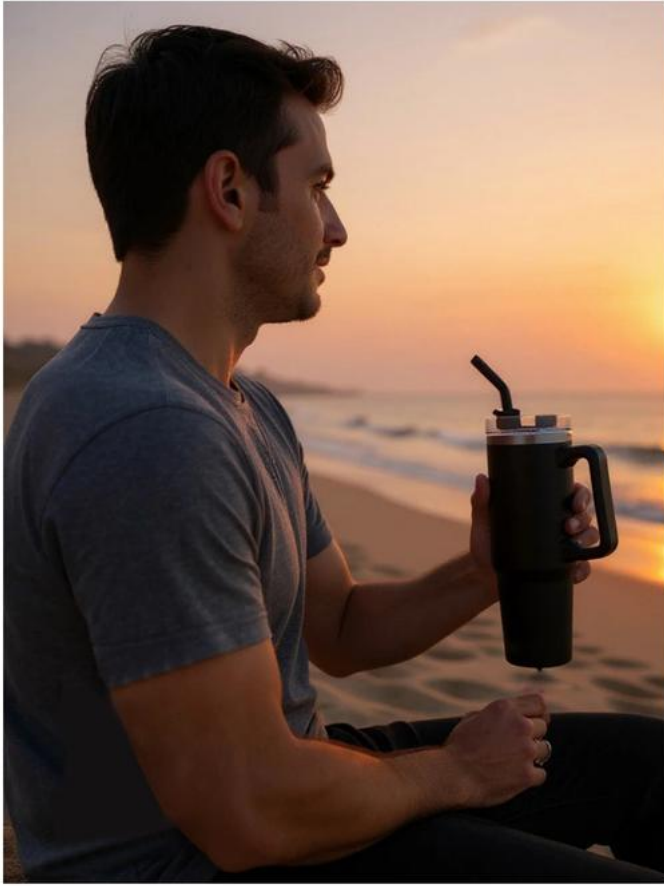


MOUTH PIECE



WIDE OPENING





E70670

E70671

E70672

E70673

E70674

E706716



GAHWA-GO SET

E7076

A sleek, travel-ready coffee set designed for espresso lovers on the move. Includes a 500ml vacuum-insulated bottle and a 90ml stackable espresso cup, both crafted with a 304 stainless steel inner body and 201 stainless steel outer shell. The bottle features a laser-engraved logo, secure silicone-sealed lid, and carry strap. The cup nests seamlessly on top, making it compact and ideal for daily use. Perfect for coffee, style, and convenience—wherever you go.

Product Size: 7.3X24.4cm.
Packaging: Black Kraft Box



MADE FROM RECYCLED STAINLESS STEEL

2-3 HOURS COLD

2-3 HOURS HOT



330ML



CALYPSO TUMBLER PRO

E7049

Double wall, geometric shape mug suitable for all kinds of hot and cold drinks made from recycled stainless steel material.

Product Size: 13x8.8 cm (diameter).
Packaging: Kraft Paper Box



E70490 E70491 E70492 E70494 E70499 E704920



2-3 HOURS HOT

2-3 HOURS COLD



CALYPSO TUMBLER

330ML



E7043

330ml double wall vacuum tumbler with unique geometric shape made from 304 stainless steel.

Product Size: 13.2x8.8cm(diameter)
Packaging: Paper Box



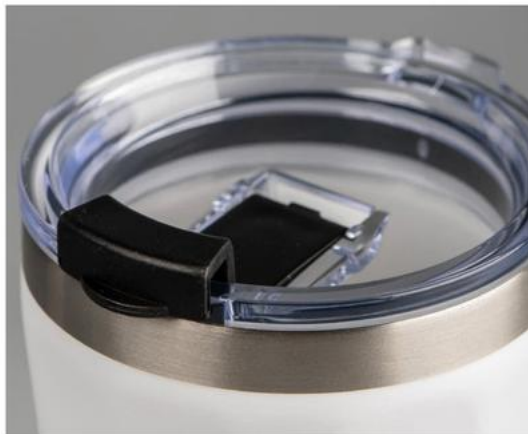
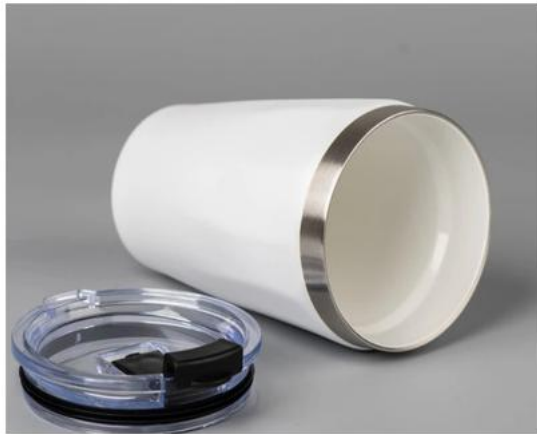
**MADE FROM
RECYCLED
STAINLESS STEEL**

330ML

**BPA
100% FREE**

 **2-3 HOURS
HOT**

 **2-3 HOURS
COLD**



E704920-C



E70490-C



E70491-C



E70492-C

CALYPSO TUMBLER PRO CERAMIC

E7049-C

Double wall, geometric shape mug suitable for all kinds of hot and cold drinks made from recycled stainless steel material with ceramic coating.

Product Size: 13x8.8 cm (diameter)

Packaging: Kraft Paper Box



**MADE FROM
RECYCLED
STAINLESS STEEL**



E70660-P



E70662



E706620

EXPLORER

900ML



E7066

Great design recycled stainless steel mug with straw and 2-way holder/handle depending on your mood in 900ml/30oz. Truly Made to fit your life, this easy to carry mug can be used in any occasion, in the office, car or in the home. This double wall vacuum mug has SS304 in and out and is with the iconic geometric design of the Calypso Model

Product Size: 24.2×8.5cm (diameter)
Packaging: Kraft Paper Box.



HOOKIPA

E7078

*WHEN CLOSE LID



09 HOURS
HOT



18 HOURS
COLD

A smart, sustainable choice for everyday hydration combines a 500ml / 17oz bottle and 330ml / 11oz tumbler in one compact design, each with its own lid and has a soft grip handle. Made from recycled stainless steel and ABS, it's durable, rust-resistant, and built for daily use.

Product Size: 21 x 7.4cm Dia.

Packaging: Kraft Box



E70782



E707820



7500mAh Long-lasting Power

Brew coffee anytime, anywhere with extended battery life.
Perfect for outdoor adventures.

LONG-LASTING POWER

50ml Water

4-5 cups

80ml Water

3-4 cups

Direct Brew

50+ cups

Stainless Steel



Coffee powder



Small capsule



Big capsule



ESPRESSO GO SET

E7077

This compact 3-in-1 coffee maker supports ground coffee, small capsules, and large capsules, offering hot and cold brew modes. With a built-in 7500mAh battery, 40 PSI pump, and dual espresso cups included, it's the perfect companion for travel, work, or outdoor adventures. Set contains 2x 80ml espresso packed in a pouch.

Box Size: 31 x 8.2 x 9.6cm.

Packaging: Paper Box



PORTABLE BLENDER

450 ML

E5115

BPA
100% FREE

450ML Rechargeable Mixer

Powerful and convenient for blending on the go. Ideal for smoothies, fruits, vegetables, and more. Rechargeable with up to 18 uses per charge.

Product size: 91 x 80 x 230mm

Packaging: Box



PORTABLE KETTLE

350ML

E5114

350ML Travel Electric Kettle

Compact and efficient, this 350ML portable kettle is perfect for boiling and heating water on the go. Ideal for travel, office, or personal use. Product size: 87.7x87.7x212.4mm Packaging: Box



Auto-Stirring 400ml Coffee Mug with Handle

Whip up frothy coffee, lattes, or milk anytime, anywhere with the built-in electric stirrer. Powered by 2 AAA batteries (included), this mug makes your drinks effortlessly smooth.

Double-Walled Vacuum Design: Stainless steel (SS304) interior keeps beverages hot or cold, while a durable PP outer wall ensures a comfortable grip on-the-go.



Switch for Stirring Function (On / Off)



Stirring Mechanism



400 ml



CAFFE - DWHL 3241 ● Black | DWHL 3242 ● White

- Auto-stirring double walled 400ml coffee mug with handle
- Includes 2 AAA battery to operate the inbuilt electric stirrer
- Enjoy frothy coffee, Lattes and milk on-the-go
- Double walled vacuum: SS304 Stainless Steel inside and PP outer wall

Branding Options : Silkscreen Printing

Product Size : 14.4 X 13.1 cm

Packing Details : 64.5 X 51 X 32 cm; 50 pcs /carton; gw/nw: 14.6/13.6 kg / carton





750 ml



Stay refreshed in style with our 750ml Vacuum Insulated Water Bottle. Crafted with a durable stainless steel body (Inner 304, Outer 201). The smart sipper design paired with a secure lockable lid ensures spill-free convenience on the go, making it the perfect companion for work, travel, or everyday adventures. A blend of elegance, strength, and practicality—hydration has never felt this premium.



Sip Straw



Secure Lid



Carry Loop

EVORA - DWHL 3268 ● Black | DWHL 3269 ○ White | DWHL 3270 ● Navy Blue

- Double wall stainless steel vacuum-insulated water bottle - 750ml
- Made with stainless steel (Inner 304, Outer 201 grades)
- Keeps drinks 8hrs hot or 12hrs cold.
- With a sleek sipper and lockable lid, it's strong, spill-free, and always ready on the go.

Branding Options : UV Printing, Silkscreen Printing, Laser Engraving
Product Size : 8 X 25.5 cm



12HRS



8HRS



Suitable for
MagSafe



760 ml



FERRO - DWGL 3257 ● Black | DWGL 3258 ● White
 DWGL 3259 ● Navy Blue | DWGL 3260 ● Sand

- Double walled stainless steel water bottle with sipper - 760ml
- Sipper feature allows drinking without opening lid, adding convenience
- Magnetic attachment features for holding phones conveniently
- Includes extra magnet ring for non-Mag phones

Branding Options : Silkscreen Printing, UV Printing, Laser Engraving
 Product Size : Ø 8 X 25 cm
 Packing Details : 84 X 44 X 27 cm; 50 pcs /carton; gw/nw: 20kg / carton





CHOOSE HOW YOU DRINK.



SIP STRAW LID

Pop-up spout ensures quick access and cleaner sips even while on the go



DRINKING HOLE

Push the button to flip it open, and take a sip from the drinking hole



INTEGRATED LID HANDLE

Simple to grab, hold, or carry around in the middle of the day!

AERO SIP - DWHL 3250 ● Black | DWHL 3251 ● White

- Comes with a dual-function lid (sip straw & drinking hole)
- Made from 67% Recycled Stainless Steel
- Sleek matte black finish for a modern, minimalist style
- Leak-resistant design ideal for travel or commutes
- Fits most car cup holders and backpack pockets
- Reusable, eco-friendly, and built to last

Branding Options : Silkscreen Printing, UV Printing, Laser Engraving

Product Size : 7.5 x 7.5 x 27.5 cm

Packing Details : 50 x 34 x 30 cm; 24 pcs /carton; 11.4/9.4kgs



FRONT



BACK



eco
sustain



1 000
ML

eco
sustain



400
ML

Remove Silicon
Spout for Easy
Cleaning



Handle
to Carry



DW-056 EcoTwist®

The pinnacle of sustainable luxury in sport water bottles. Crafted from high-quality, recycled 304 stainless steel, it offers durability in a lightweight design, weighing just 296g. The sleek, vortex-inspired shape enhances both style and function. The disassemblable lid ensures easy cleaning, while the flexible, durable strap adapts to your needs. Every part of this bottle is dishwasher safe. Size: 8.2 x 26.2 cm.



Made from Recycled Stainless Steel



Keeps your drink 12Hrs Cold | 4 Hr Hot



Ceramic Coating

DW-057 EcoBrew®

The perfect blend of eco-luxury and functionality. Made from recycled stainless steel with a ceramic inner coating, it ensures pure, odorless flavors for your coffee and tea. The screw-on, leak-proof lid accommodates frothy beverages and features a carrier loop for optional crossbody carrying. Durable and easy to clean, this tumbler represents sustainability with style. Size: 8 x 14.5 cm.



eco
sustain



- Leak-proof
- Copperfect™ isolation
- Dishwasher safe
- Made from recycled stainless steel
- Top hot drinks with sport cap
- FDA standard BPA-free
- Triple-Layer™ Insulation

DW-063 EcoBrew +
Brew Sustainably. Sip Smart.

EcoBrew+ is the ultimate hybrid drinkware that lets you effortlessly switch between a mug and a bottle – whenever and wherever you need. Designed for the eco-conscious and always-on-the-go, this versatile companion blends smart design with sustainable materials, making it perfect for coffee, tea, or infused hydration.

- Features:**
- Innovative 2-in-1 design: easily switch between mug and bottle modes
 - Leak-proof and travel-friendly
 - Ideal for both hot and cold beverages
 - Simplify your sip—one smart switch at a time—with EcoBrew+
 - Sleek, sustainable, and reusable construction
 - BPA-free and environmentally conscious
 - Ample branding space for standout corporate gifting





DW-048 TwistGrip

The TwistGrip is a 500ml double-wall stainless steel bottle with a unique twist shape. Its innovative cap design doubles as a convenient holder, making it easy to carry on the go. Stylish and functional, this bottle is perfect for staying hydrated in style, making it an excellent corporate gift.



DW-048WH



1180 ML



Car Cup Holder Compatible



Comfort Grip Handle



Maintains Temperature



2 Ways to Drink

DW-057 EasyGrip®

Sip your way. Carry with ease.

The Park Avenue EasyGrip 2-Way Mug is designed for modern professionals who value both style and convenience. With its 40oz (1180ml) stainless steel, vacuum-insulated body (SS301 outer and SS304 inner), it ensures beverages stay hot or cold for extended hours. The matte spray finish gives it a premium look, while the sturdy PP handle and strap-to-the- lid make it easy to carry on the go. The dual-sip design offers versatility—whether you prefer a quick sip or a steady drink, EasyGrip adapts to your pace. It's more than just a tumbler, it's a corporate gift that reflects sophistication and everyday practicality.



135 x 2 Cm
Customizable Lanyard



Lid with Storage

Detachable Cup

DW-049 HydroFlex

The HydroFlex is a 500ml double-wall stainless steel bottle designed for ultimate convenience and versatility. It features a detachable cup at the base and comes with one lanyard stored in the bottle cap, which doubles as a medicine holder when not in use. Perfect for on-the-go hydration, this innovative bottle makes a thoughtful and practical corporate gift.



DW-049BL



DW-049BK



Hans Larsen Vacuum Stainless Steel Bottle with Sports Lid



2-in-1 Modular Hydration Gift Set



Glass Bottle with Jute Sleeve



BOBBY HERO Anti-theft Backpack in rPET material



Recycled Stainless Steel Vacuum Bottle with Loop

This product supports water.org



Copper Vacuum Insulated Double Wall Water Bottle



Ocean Bottle



Hans Larsen RCS Recycled Stainless Steel Insulated Water Bottle



Hans Larsen Borosilicate Glass Bottle with Jute Sleeve



Soft Touch Insulated Water Bottle

soft touch feel



Hans Larsen Borosilicate 550 ml Recycled Insulated Water Bottle Glass Bottle



This product supports water.org



soft touch feel

Soft Touch Insulated Water Bottle



Multi-Functional Drink Bottle with Magnetic Phone Loop



Double Wall Flask with Bamboo Lid



Double Wall Stainless Bottle with Bamboo Lid and Base



Double wall vacuum insulating bottle in recycled stainless steel



Double wall vacuum insulating bottle in recycled stainless steel



Double wall vacuum insulating bottle in recycled stainless steel



Double wall vacuum insulating bottle in recycled stainless steel



Double wall recycled stainless steel



Double wall insulating bottle in recycled stainless steel



Single wall recycled stainless steel bottle



Double wall stainless steel vacuum insulated bottle with hook hanger



Eco-neutral Wheat Straw Glass Bottle



Tritan™ steel bottle with hydration reminder



Double wall stainless steel vacuum insulated bottle with twist lid and silicone grip



Single wall aluminium bottle with bamboo lid and carabiner



Double wall stainless steel copper insulating bottle



Double wall stainless steel insulating vacuum flask



Double wall stainless steel vacuum bottle with a cork base



Insulated Bottle With Bamboo Lid And Base WT



Stainless Steel Tumbler With Cork Bottom WT



Insulated Bottle With Bamboo Lid WT



Insulated Bottle With Bamboo Lid White



Double wall vacuum insulated flask in recycled stainless steel



Bamboo Flasks



Double wall stainless steel insulated flask with bamboo



Double wall stainless steel and bamboo vacuum flask



Double wall stainless steel insulating flask with bamboo



Double wall insulating vacuum bottle in recycled stainless steel



Double wall stainless steel and bamboo insulating vacuum flask with additional tea infuser inside



Double wall insulating vacuum bottle in recycled stainless steel



Steel/PP Double Wall Tumbler

Eco-neutral Ceramic Mug with Bamboo Lid

Recycled Stainless Steel Tumbler with Reusable Straw



Premium Glass Tumbler with Recycled Protective Sleeve

Circular Cup 8oz

Vacuum Mug With Cork Base

Ceramic Mug with Cork and Lid



Premium Insulated Travel Stainless Steel Tumbler

400ml with Innovative 360° Drinking Lid



SKROSS® TRAVEL - Classic All in One Coffee Maker

BREW by Ocean Bottle

Double Wall Geometric Mug for Hot and Cold Drinks



Double wall Stainless Steel mug with bamboo case



Double wall stainless steel flask with bamboo cover



Double wall tumbler in recycled stainless steel



Single wall tumbler in recycled stainless steel



Reusable Wheatstraw Cup 350ml



Double wall mug in recycled stainless steel



Double wall tumbler in recycled stainless



Recycled Insulated Mug



Circular NOW Cup 12oz



Full oak wooden mug



Porcelain mug with bamboo lid and handle



Double wall borosilicate glass mug with handle & bamboo lid

Double wall borosilicate glass mug with bamboo lid

High borosilicate glass teapot with infuser and bamboo lid

Double wall high borosilicate glass with bamboo lid



Double walled stainless steel tumbler with bamboo case



Borosilicate glass tumbler with a silicone protective sleeve and a bamboo lid and straw

Porcelain mug of 380 ml capacity with spoon and bamboo lid

Double wall recycled stainless steel (90% recycled stainless and 10% stainless steel) mug

Borosilicate glass tumbler with cork protective sleeve and bamboo lid